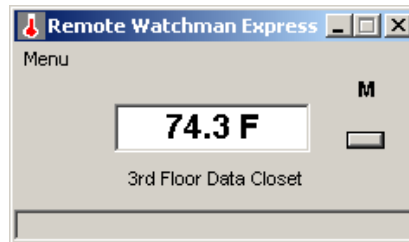
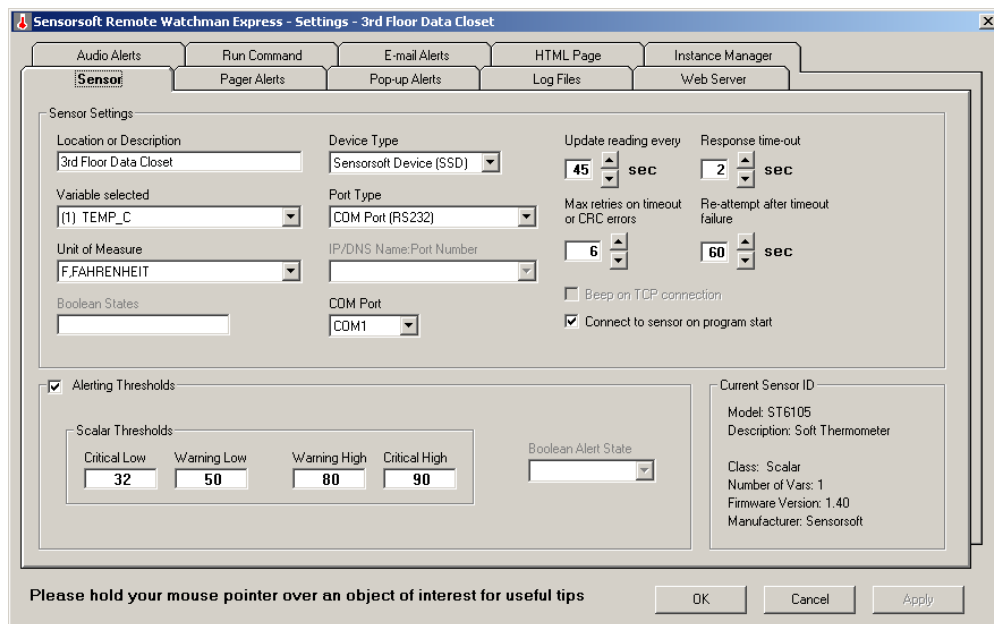


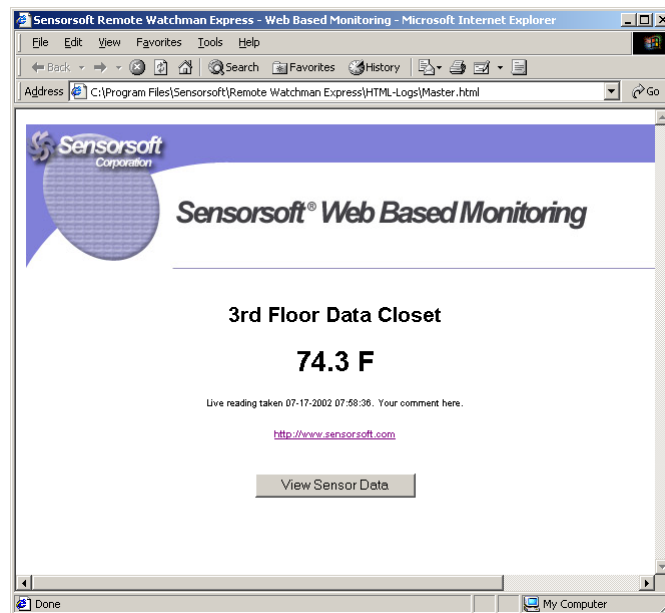
Prevent environmental problems before they cost you downtime



The Remote Watchman product line is software that allows you to control and monitor remote environments using your Windows based computer and various Sensorsoft protocol devices. It provides a low cost way for your computer to keep watch 24 hours a day, 7 days a week, giving you the freedom to do whatever you need, without worry.



With Remote Watchman Express your PC can display live measurements and readings on screen, log data to a file with a time/date stamp and most importantly - alert you with text messages to your pager or digital phone when environmental conditions become unacceptable. Remote Watchman Express is a simple solution that can monitor Sensorsoft Devices through available serial ports on your PC.



Applications

- Protect computing and telecom equipment
- Prevent spoilage or damage to frozen or perishable goods
- Monitor and log for quality control applications
- Early warning ability for unexpected changes

Features

- Monitor up to sixteen (16) different Sensorsoft devices on serial ports
- Plug and go support for all Sensorsoft devices
- Generates an HTML page that can be shared using your own web server
- Quickly add multiple software instances for additional sensors
- Alerts can launch command lines and control relay contacts
- Multiple user-defined alert thresholds include - warning, critical, return to normal and sensor disconnected
- Pager alerts can be sent to alphanumeric/numeric devices using industry standard TAP protocol or DTMF services (numeric only)
- Paging uses an inexpensive AT command compatible modem (not included)
- On-screen visual alerts and audio alerts
- Log files are stored in ASCII (text) delimited format with time/date stamp for simple export to MS-Excel or other graphing software

Minimum System Requirements

OS: Microsoft Windows 95/98/NT/2000/XP
CPU: Intel Pentium II 300 MHz processor or equivalent
RAM: 8 Mb per instance
Hard Disk Space: 8 Mb for libraries and 1 Mb per instance (not including log files). Installation program will take at least 25 MB of free space
CD-ROM drive
Modem is required if paging is used.
Support for U.S. Robotics Sportster, Practical Peripherals, Hayes and Hayes compatible
Web Browser (Microsoft Internet Explorer is recommended)
16 Bit sound card and speakers are required if audio alerts are required

WARNING

Sensor reading is 74.3 F in 3rd Floor Data Closet
at 07-17-2002 07:59:27

[CLICK HERE TO REMOVE](#)