

Preventing water damage is easier than you think...

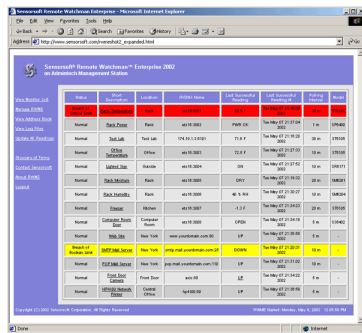


SM6201C Sensorsoft® Flooding Sensor

The Sensorsoft protocol based Flooding Sensor is a low cost way to monitor and protect a remote location from water damage or to get an early warning before extensive damage or safety issues can be possible.

The Sensorsoft Flooding Sensor has two "sensor pins" located on the bottom of the sensor enclosure to detect the presence of water. The sensor is completely sealed, which makes it water proof, allowing it to continue alerting you in the event of a leak.

The Sensorsoft Flooding Sensor connects via cable to a serial port on your computer. This Sensorsoft device, like all of our sensors, uses our unique Sensorsoft auto discovery protocol that ensures a quick and easy installation without set-up or data communication errors.



Sensorsoft Remote Watchman Enterprise

Sensorsoft Remote Watchman software is available to provide a convenient way to display your Flooding Sensor readings, set alarms and record in a file while you're away from your computer. Should the area get WET (or alternately DRY), an alert can be sent to pagers and e-mail addresses.

Features

- Display whether a location is WET or DRY on your computer screen
- Software sets off an alarm when sensor gets wet or dry.
- Continually monitor and log readings to a file
- Connects to any RS232 serial port
- Windows and UNIX software available
- Plug and go operation, no setup required
- 16 bit CRC scheme between computer and the sensor insures reliable readings
- Locate the sensor up to 1000 ft. from a computer or network device server
- Send alerts to pagers/digital phones or e-mail addresses with our Remote Watchman or SCOM UNIX software
- Access or share your Sensorsoft Flooding Sensor on the Web with our Remote Watchman software
- No power supply required, Sensorsoft flooding Sensor is powered from the serial port



Applications

- Computer & server rooms
- Find out if water pipes or roofs are leaking
- Warehouses
- Buildings
- Inside equipment and machinery

Specifications

Detection Capabilities: Can detect water or moisture present on floors, carpets and other surfaces. Provides a WET/DRY indication in software.
Maximum reading rate: one reading every second
Housing Dimensions: 8 cm (3.1") x 4 cm (1.6") x 2 cm (0.8")
Housing Material: injection molded ABS thermoplastic
Housing Colour: light gray
Sensor type: Two penetrating gold plated pins and associated electronics that detect changes in conductance
Operating temperature range: 0 ° C to +60 ° C (32 ° F to +140 ° F)
Communications cable: built-in 6 m (20 ft.) cable with DB-9F (female) mini D-SUB connector
Power source: Port-powered (RTS and DTR, both asserted).
Power supply current drain: < 10 mA
Communications Interface: RS232C using TX,RX,RTS,DTR and GND. One device per serial port.
Maximum extension cable length: 305 m (1000 ft.) using recommended cable type. Low capacitance shielded cable or UTP is recommended.
Communications Protocol: Sensorsoft Device Protocol, Version 2.0 (Software developers will find a detailed description of this protocol included in the User Manual)
Error control: 16 bit CRC (cyclic redundancy checking) for detection of communication errors between the device and host computer.