

Be Warned of Power Loss Immediately!

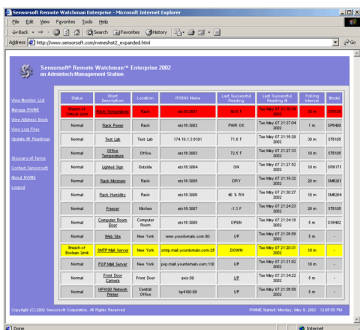


SP6400J Sensorsoft® Power Sensor

The Sensorsoft protocol based Power Sensor is a low cost power monitor that allows you to be informed as soon as power fails or returns to normal at any remote location.

The Sensorsoft Power Sensor can be conveniently read from your computer, regardless of where you locate the sensor and can alert you in various ways if there is a power interruption. The sensor connects via a cable to a serial port on your computer or network device server.

The Sensorsoft Power Sensor, like all of our sensors, uses our unique Sensorsoft auto discovery protocol that insures a quick easy installation without set-up or data communication errors.



Sensorsoft Remote Watchman Enterprise

Sensorsoft software is available to provide a convenient way to display the power state, set alarms and record readings in a file while you're away from your computer. Should the power fail or return an alert can be sent to pagers and e-mail addresses.

Features

- Display the power state of a remote location on your computer screen
- Set off an alarm when power fails or returns
- Continually monitor and log readings to a file
- Connects to any RS232 serial port
- Windows and UNIX software available
- Boolean class device - reads PWR FAIL or PWR OK
- Plug and go operation, no setup required
- 16 bit CRC scheme between computer and the sensor insures reliable readings
- Locate the sensor up to 1000 ft. from computer or network device server
- Send alerts to pagers/digital phones or e-mail addresses with our Remote Watchman or SCOM UNIX software
- Access or share your Sensorsoft Power Sensor on the Web with our Remote Watchman software



Applications

- Computer & telecommunication rooms
- Pharmacies
- Monitor power of air conditioning or heating units
- Cold Storage - ensure quality of frozen products and matter
- Warehouses
- Buildings

Specifications

Detection Capabilities: Can detect availability and loss of AC mains power.
Maximum measurement rate: one reading every second
Housing Dimensions: 8 cm (3.1") x 4 cm (1.6") x 2 cm (0.8")
Housing Material: injection molded ABS thermoplastic
Housing Colour: light gray
Communications connector: 8 position modular jack, (accepts 8 position plug RJ45)
Power source: Port-powered (RTS and DTR, both asserted)
Power supply current drain: < 10 mA
Power detector connector: 2.1 mm power jack, accepts plug from AC-DC power adapters such as P/N PA61XX.
Operating temperature range: 0 ° C to +60 ° C (32 ° F to +140 ° F)
Communications Interface: RS232C using TX,RX,RTS,DTR and GND. One device per serial port.
Maximum communications cable length: 305 m (1000 ft.) using recommended cable type. Low capacitance shielded cable or UTP is recommended.
Communications Protocol: Sensorsoft Device Protocol, Version 2.0
Error control: 16 bit CRC (cyclic redundancy checking) for detection of communication errors between the device and host computer.

For more information and up-to-date pricing on this product and other products that Sensorsoft offers please visit our web site at www.sensorsoft.com

Sensorsoft, SCOM and Remote Watchman are trademarks of Sensorsoft Corporation.



6375 Dixie Road, Units 1 & 2
Mississauga, Ontario L5T 2E7
Tel: 905-564-0690