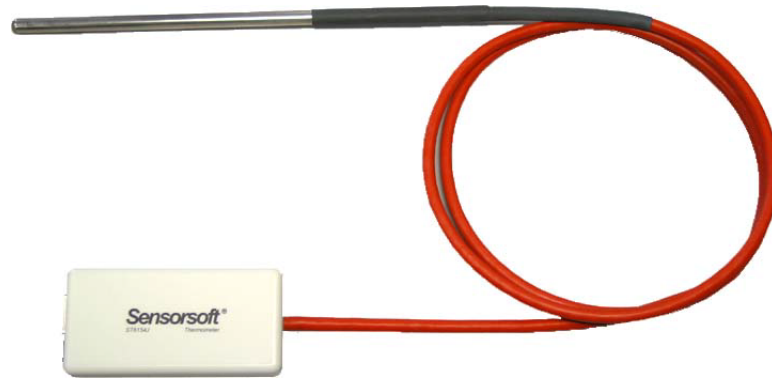


Protect your cold storage rooms from heat

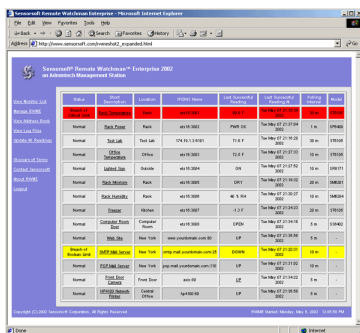


ST6154J Sensorsoft® Thermometer

The Sensorsoft protocol based thermometer is a low cost temperature sensor for monitoring the temperature of a remote location from your computer. Now you can measure the temperature of buildings, cold storage, warehouses, equipment rooms and laboratory experiments, all from the comfort of your computer.

Traditional scale thermometers are often awkward to read, can break and spill toxic fluid and must be read at the location where installed. The Sensorsoft Thermometer however is rugged and can be conveniently read from your computer, regardless of where you locate the sensor.

The Sensorsoft Thermometer connects via a cable to a serial port on your computer or network device server. This Sensorsoft device, like all of our sensors, uses our unique Sensorsoft auto discovery protocol that insures a quick and easy installation without set-up or data communication errors.

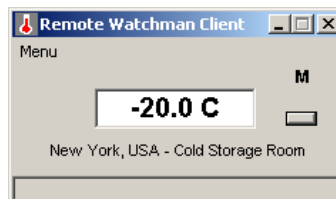


Sensorsoft Remote Watchman Enterprise

Sensorsoft Remote Watchman software is available to provide a convenient way to display your temperature readings in Celsius or Fahrenheit, set alarms and record temperature readings in a log file, while you're away from your computer. Should the temperature go out of the limits you set, alerts can be sent to pagers and e-mail addresses.

Features

- Display the temperature of a remote location on your computer screen
- Set off alerts when temperature is too high or low
- Continually monitor and log readings to a file
- Connects to any RS232 serial port
- Windows and UNIX software available
- Readings in Celsius or Fahrenheit
- Plug and go operation, no setup required
- 16 bit CRC scheme between computer and the Sensorsoft Thermometer insures reliable readings
- Locate the Sensorsoft Thermometer up to 1000 feet from a computer or device server
- Send alerts to pagers/digital phones or e-mail addresses with our Remote Watchman or SCOM UNIX software
- Access or share your Sensorsoft Thermometer on the Web with our Remote Watchman software
- No power supply required, Sensorsoft Thermometer is powered from the serial



Applications

- Cold Storage Rooms
- Prevent damage to living plants
- Prevent frozen water pipes
- Outdoor Temperature
- Blood Labs
- Inside equipment and machinery
- Pharmacies
- Quality assurance labs
- Environmental testing

Specifications

- Probe Measurement Range:** -55 °C to +125 °C (-67 °F to +257 °F)
- Precision:** 0.5 °C
- Accuracy:** +/- 0.5 °C over 0 °C to +70 °C, +/- 1 °C over remainder of temperature range
- Maximum measurement rate:** one reading every second
- Probe Dimensions:** 20.3 cm (8") long, 6 mm (1/4") diameter, stainless steel probe with 1.2 m (4 ft.) long, high-temp silicone rubber cable
- Housing Dimensions:** 8 cm (3.1") x 4 cm (1.6") x 2 cm (0.8")
- Housing Material:** injection molded ABS thermoplastic
- Housing Colour:** light gray
- Sensor type:** semiconductor
- Communications connector:** 8 position modular jack, (accepts 8 position plug RJ45)
- Power source:** Port-powered (RTS and DTR, both asserted) or via External DC power connector
- Power supply current drain:** < 10 mA
- External DC power connector:** 2.1 mm power jack, automatic polarity correction and over-voltage protection.
- External power supply voltage:** 6.0 - 14.0 VDC
- Communications Interface:** RS232C using TX,RX,RTS,DTR and GND. One device per serial port.
- Maximum communications cable length:** 305 m (1000 ft.) using recommended cable type. Low capacitance shielded cable or UTP is recommended.
- Communications Protocol:** Sensorsoft Device Protocol, Version 2.0
- Error control:** 16 bit CRC (cyclic redundancy checking) for detection of communication errors between the device and host computer.

For more information and up-to-date pricing on this product and other products that Sensorsoft offers please visit our web site at www.sensorsoft.com.

Sensorsoft, SCOM and Remote Watchman are trademarks of Sensorsoft Corporation.



6375 Dixie Road, Units 1 & 2
Mississauga, Ontario L5T 2E7
Tel: 905-564-0690